

Las Vegas Downtown Civic Center Building and Plaza

Where people want to be.

JUNE 16, 2021

LGA **bnim** OJB
ARCHITECTURE

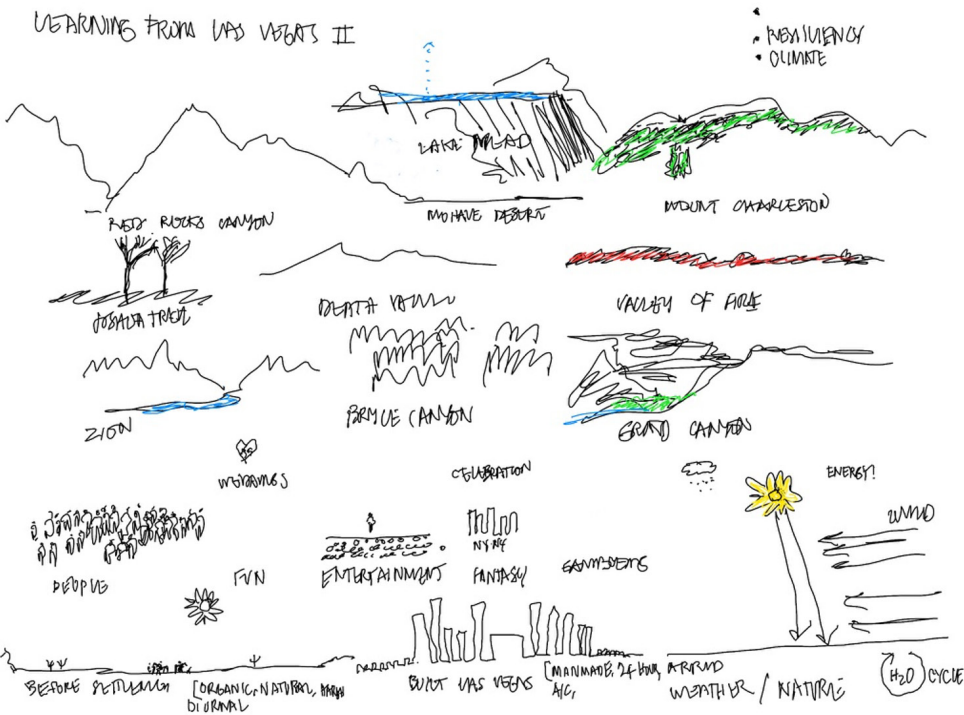


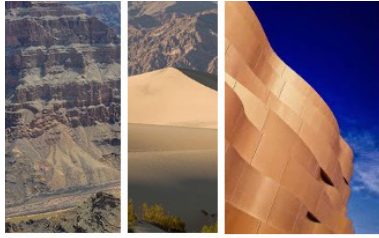
Imagine.

Learning from Las Vegas II

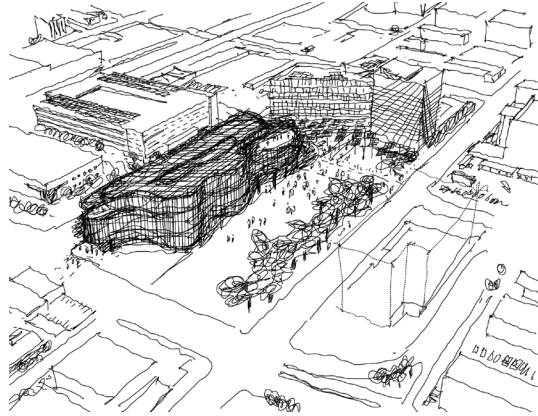
The City of Las Vegas has undertaken bold advances to serve its residents and visitors responsibly through progressive steps towards renewable energy, water reuse, positive climate actions and in creating places where people want to be. At the city scale, this is by broadly looking at how the natural and built resources of Las Vegas Valley are better nurtured and utilized to create healthy beautiful experiences for everyday life as well as for the millions of visitors each year.

Our design approach for the Downtown Civic Center Building and Plaza is focused on and draws from nature and the built context surrounding the site. In a short amount of time, we explored landscape and building options that aim to make the precinct better for those already working in City Hall and the new Municipal Courthouse. The landscape is meant to extend strategies that began with City Hall to create beautiful, shady, complete streets. The Plaza is considered a flexible multi-purpose space that works well with a few occupants as well as with large celebrations and gatherings.

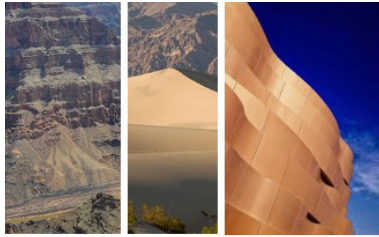
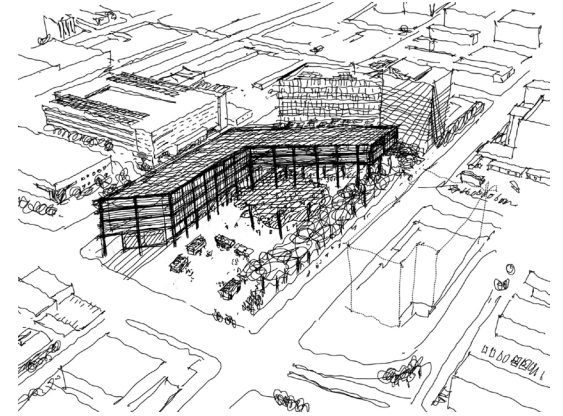




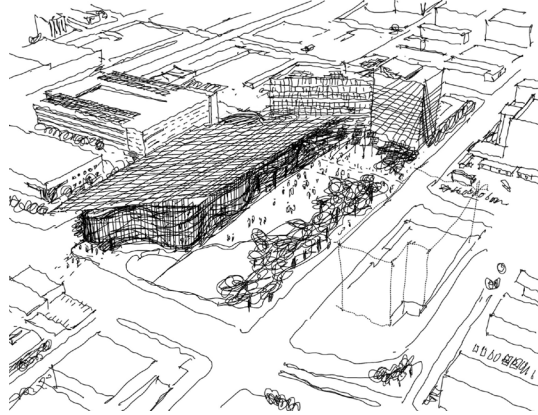
Design informed by City Council Chamber Shape



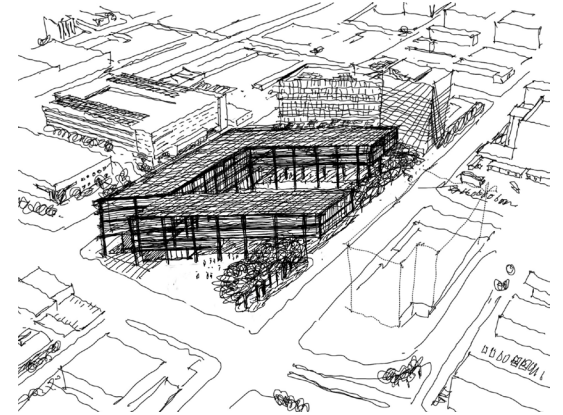
Design informed by west geometry



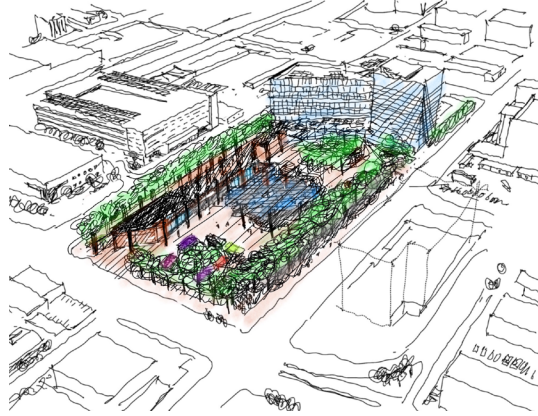
City Council influence with roof canopy
Phase Three building



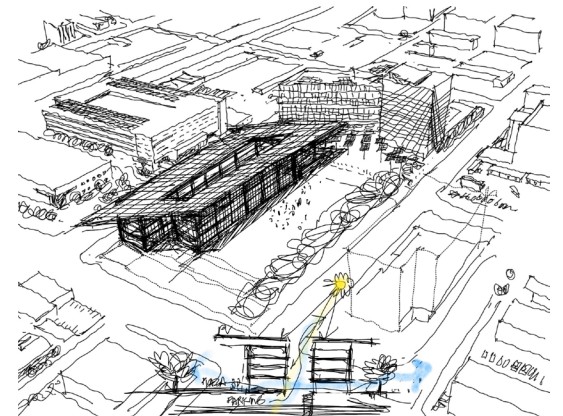
Phase Three building



Landscape with buildings removed



Slender wings joined by daylight canyon

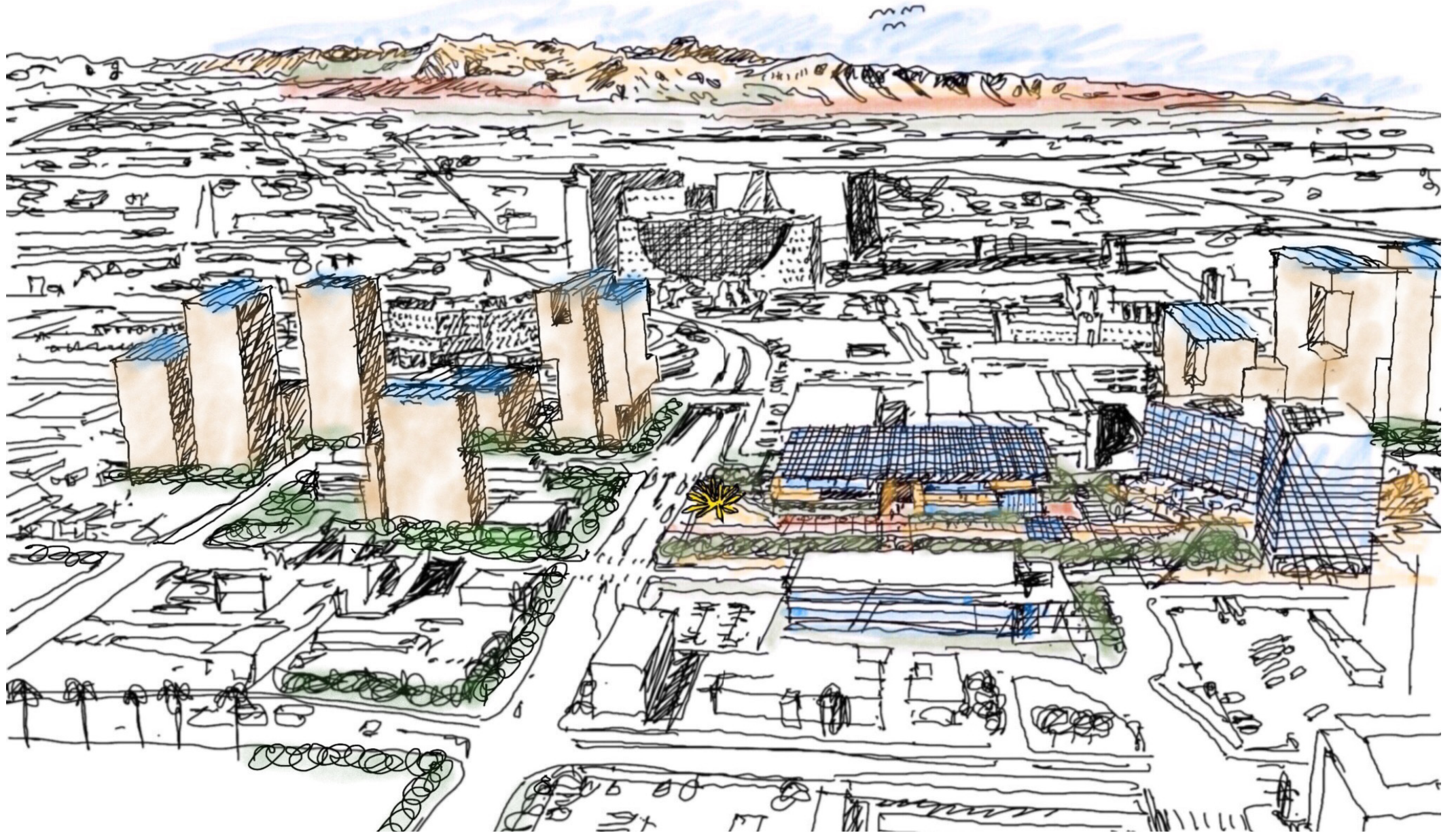


Connection to Place and Community

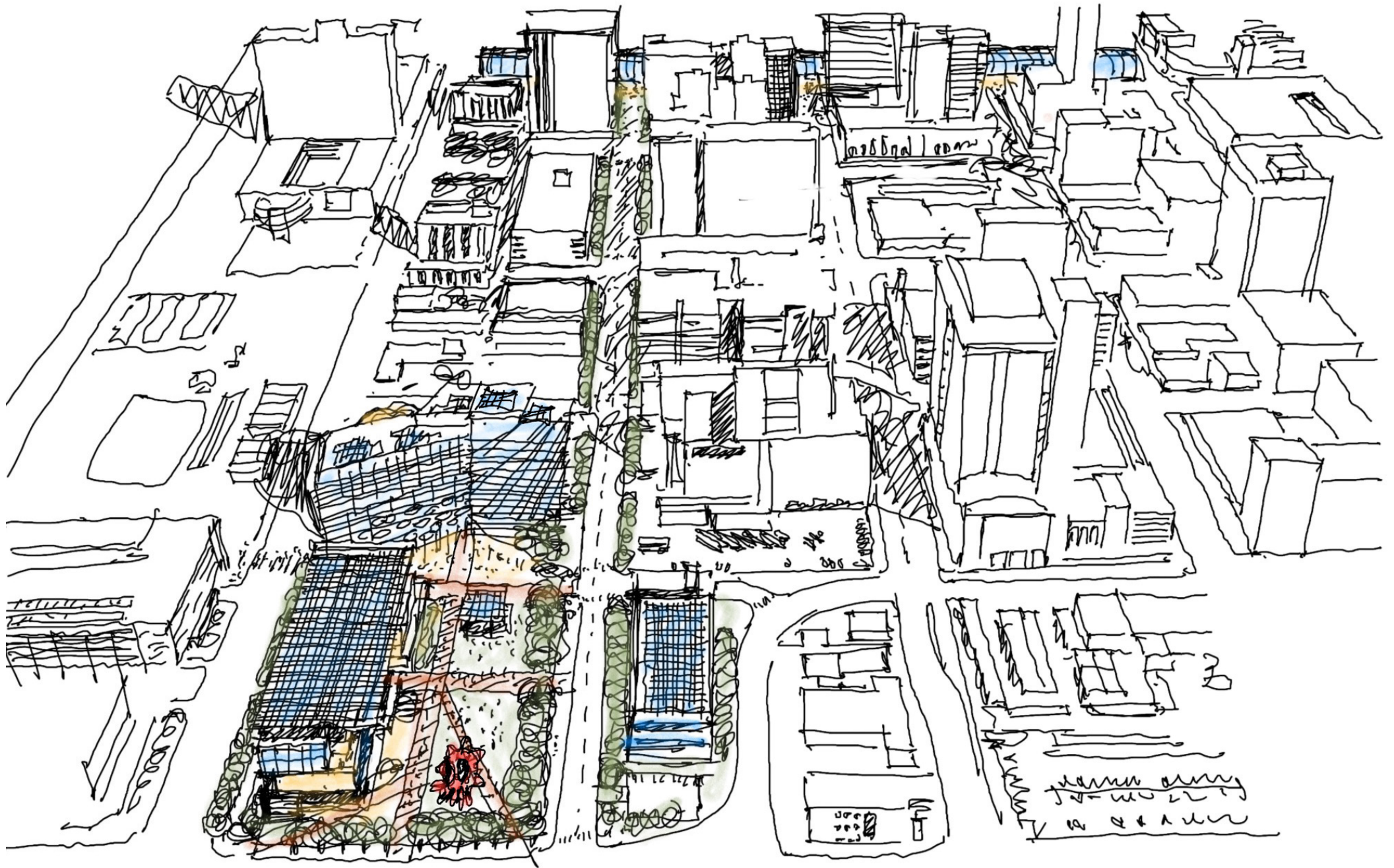
We understand that people are better off when connected to nature and community. We also understand that environments that engage with nature authentically and effectively help deliver organizational effectiveness, higher productivity and happier and healthier employees. Daylight, authentic local plants and materials, operable windows when appropriate, access to sunlight and shade, and buildings and systems that operate in concert with local weather conditions are all strategies that we employ to create healthy beautiful environments that people want to be in.

The design approach that we composed is a singular idea of landscape and building that complements and takes cues from City Hall and the natural environment of Las Vegas Valley. Its horizontality complements the vertical nature of City Hall. It borrows materials and colors and reconfigures them into a landscape and building that merge together at the ground plane, as well as on each of the levels of the new building. Portions of the building have been lifted to create a welcoming presence and shade along with access to the outdoors, which is provided on each level.





Plaza and Building design are connected to City Hall and Las Vegas Valley

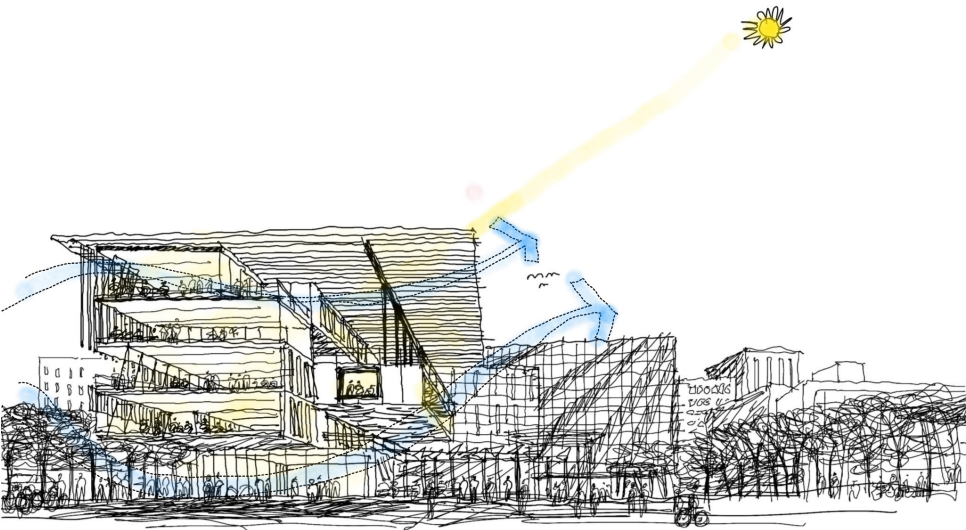


Aerial view of plaza, new building and complete streets

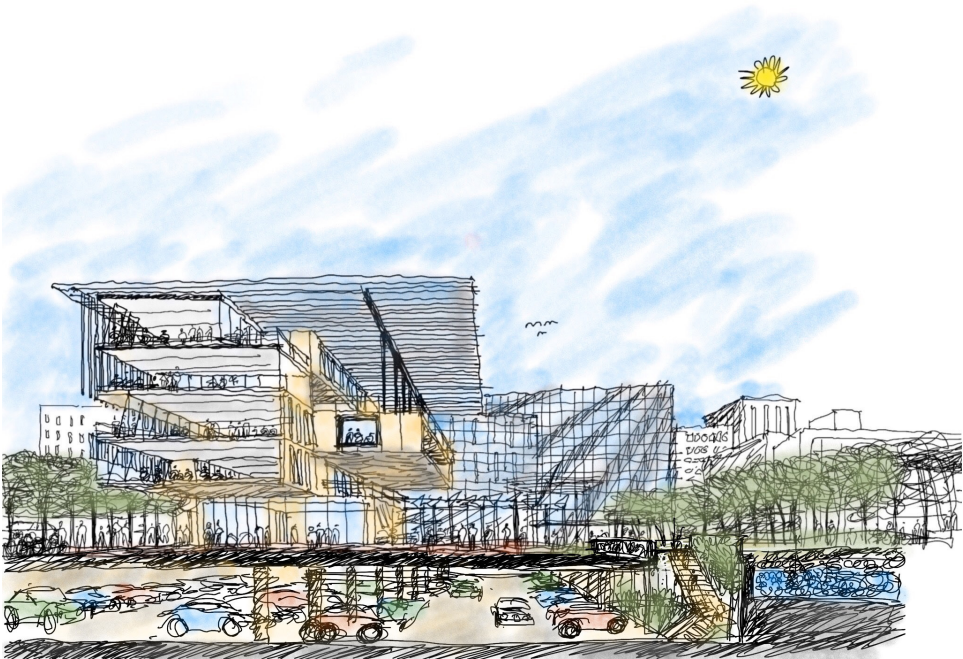
Extroverted Building

We have attempted to create an extroverted building that reaches out to the entire Las Vegas community and welcomes activity well beyond normal business hours and provided ideas of programming serving the entire City. Through these intentional strategies there will be presence and eyes on the Plaza more hours each day.

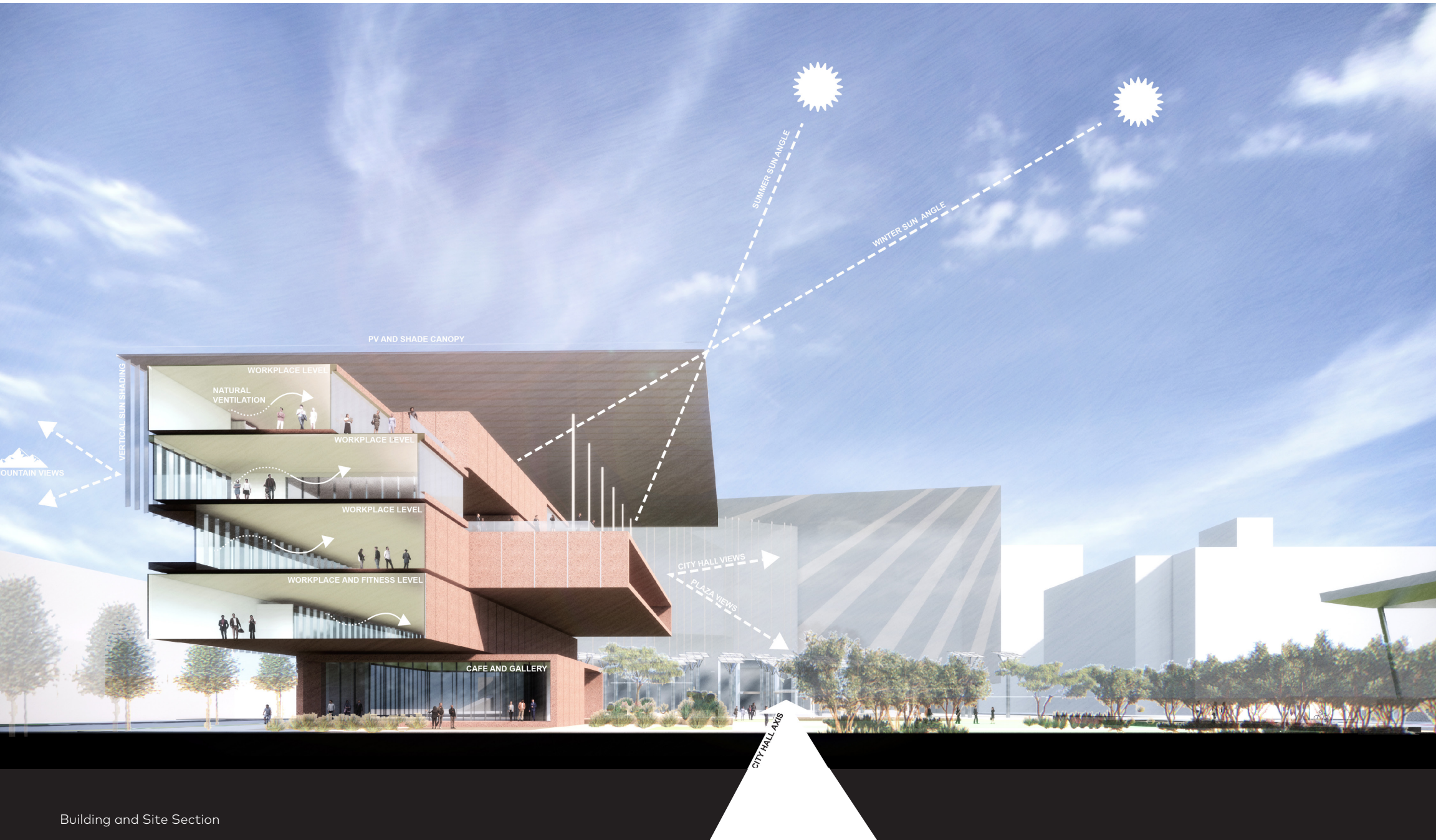
Our design approach is termed Human Purposed Integrated Design. The results are beautiful integrated living environments that inspire change and enhance the human condition. We believe that our design for the new Downtown Civic Center Building will be beautiful, promote organizational effectiveness and be powered by its own rooftop solar array. The design approach that we are presenting utilize passive strategies and highly efficient building systems to achieve these results. In the short time that we have worked there are many unanswered questions, however our past history of similar projects and our entire portfolio of high performing buildings provide confidence that these results are achievable for the City of Las Vegas.



Sectional perspective illustrating connection to nature, plaza and Main Street



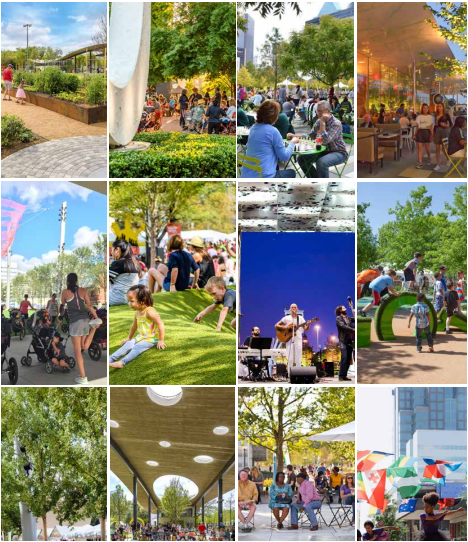
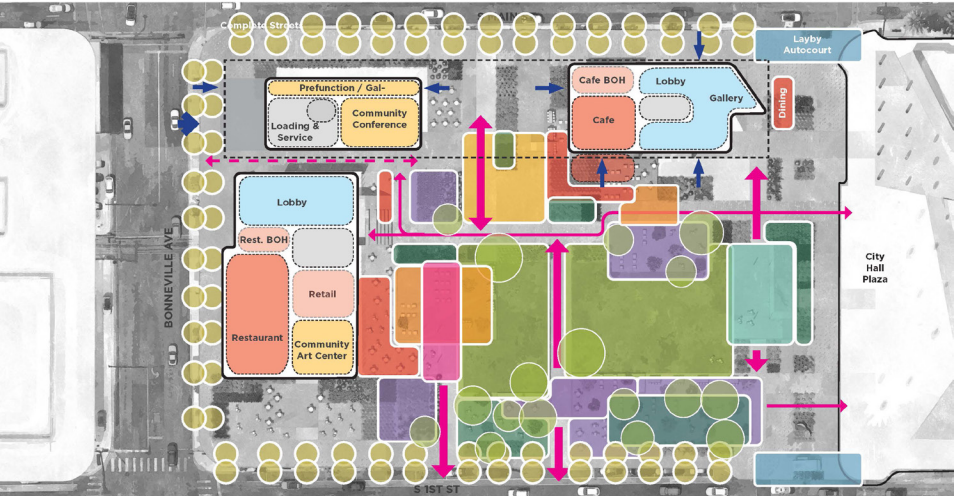
Parking garage option with entry garden and stair



Building and Site Section

Program and Programming

GROUND FLOOR PLAN



PROGRAMMING OPPORTUNITIES



PARKS & OPEN SPACE



Aerial view from above City Hall looking at the Civic Plaza below



The open space of the park and plaza are a return on investment that bring civic pride and collaborations through flexibility, functionality, and creating connections.

Outdoor rooms and café spaces provide connectivity between building and landscape while offering many scales of space for the public to enjoy within the larger context of the civic plaza.

Gateway to the plaza created by City Hall and the new Civic Building upon arrival from

the adjacent parking garage



New City Courthouse

Connection of City Hall plaza and new civic plaza into a unified whole, serving all of the community in a cohesive downtown center.

Public art integration as an activation strategy for the civic plaza along with local and shade providing planting.

Transparency in concert with public programming at ground floor spaces creates visual connectivity and activates plaza and building through shared uses.

View from Main Street looking East through the mid-block "Gateway Opening"



Porosity/openness at the street level creates a gateway and provides visual and physical connectivity to the park/plaza from Main Street while creating shade, integration of the building and landscape, and offering inhabitable scales of space.

Integration of architecture and landscape with inviting dining spaces from comfortable and generous sidewalks.

View from the Civic Plaza looking at the iconic Las Vegas City Hall to the North



Layers of activation in open, green and shaded spaces help create a sense of community and belonging.

View from Main Street and Bonneville Avenue looking Northeast

PV shade canopy turns down to create vertical sunshade articulation at west facade, echoing the vertical articulation of City Hall, to provide experiential and performative impact (glare mitigation and energy use reduction).

Celebration of the desert through iconic architecture and human-scaled sidewalks that create a sense of place.

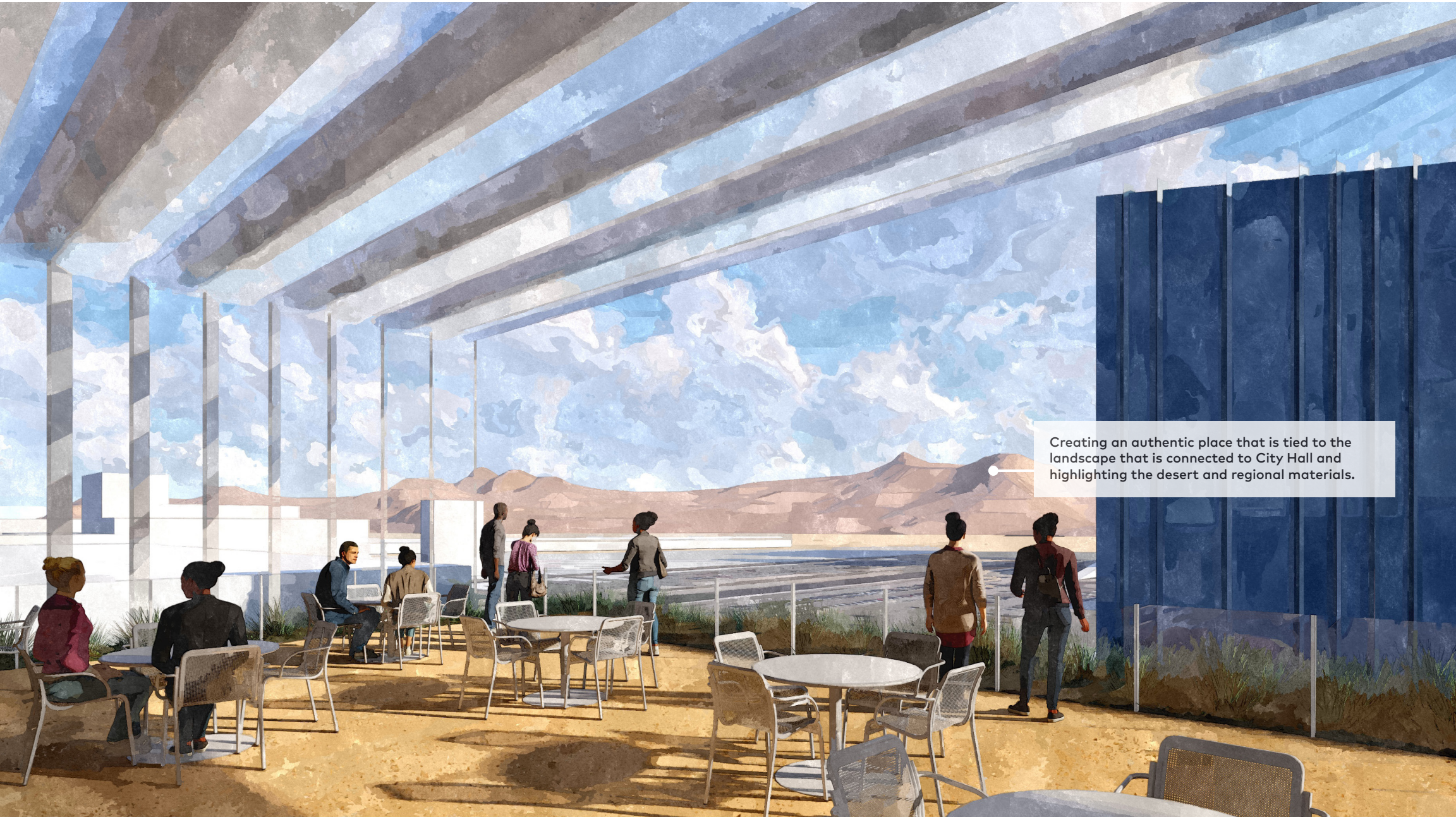


Flexible lawn for various activities including cultural festivals and concerts



A sense of belonging that promotes diversity and inclusion through scaled-down lounging and home-like spaces surrounded by unique planting and seating.

View from terraces looking beyond the Spring Mountains to the Northwest



Creating an authentic place that is tied to the landscape that is connected to City Hall and highlighting the desert and regional materials.

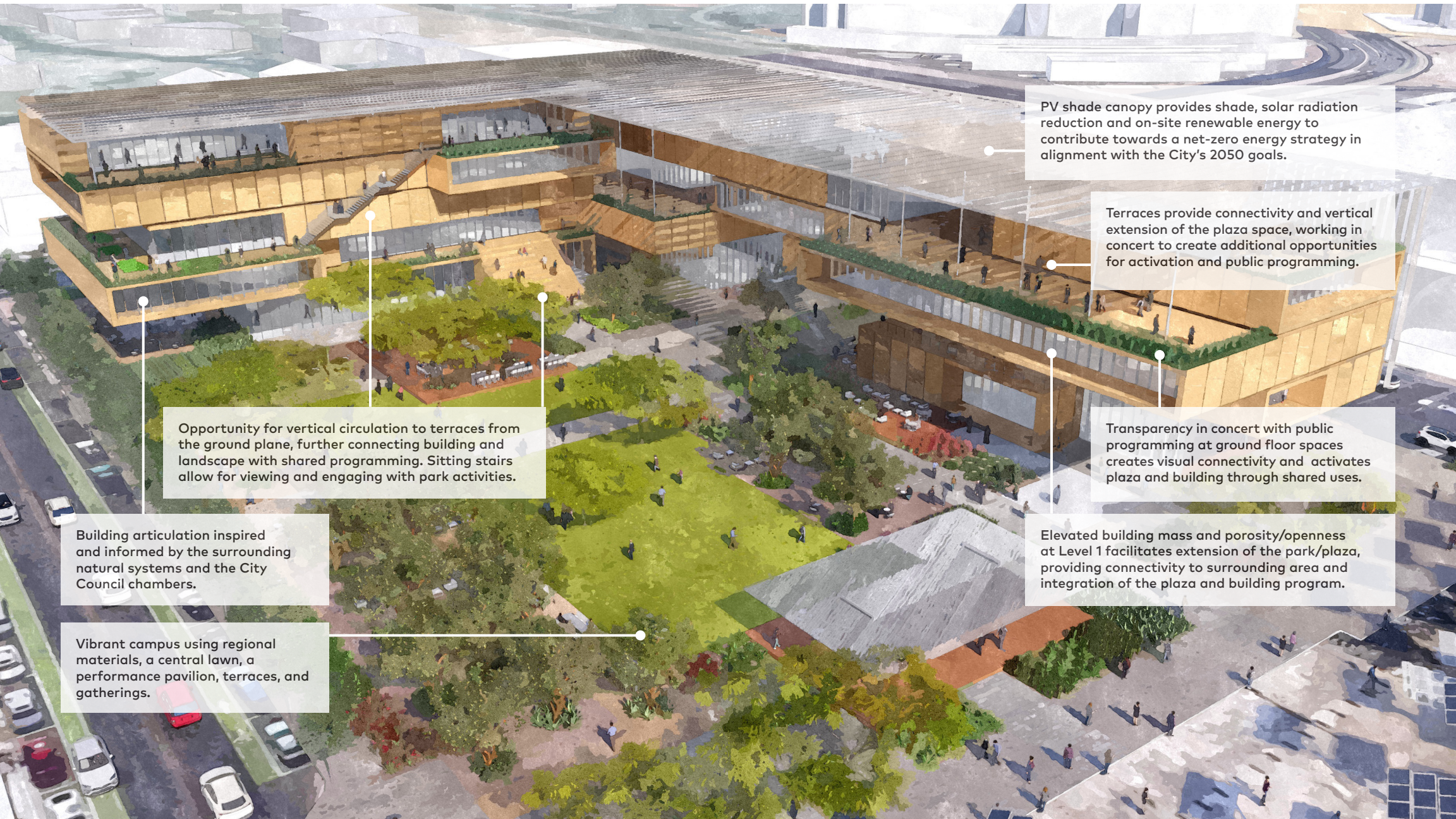
View with trees on the plaza from 1st Street



The new plaza serves as a development catalyst where desert planting, wide walkways, gathering spaces with the backdrop of City Hall come together.

Terraces views across the Plaza toward City Hall.

Aerial view looking down on the plaza from 1st Street and E Clark Avenue



PV shade canopy provides shade, solar radiation reduction and on-site renewable energy to contribute towards a net-zero energy strategy in alignment with the City's 2050 goals.

Terraces provide connectivity and vertical extension of the plaza space, working in concert to create additional opportunities for activation and public programming.

Opportunity for vertical circulation to terraces from the ground plane, further connecting building and landscape with shared programming. Sitting stairs allow for viewing and engaging with park activities.

Building articulation inspired and informed by the surrounding natural systems and the City Council chambers.

Vibrant campus using regional materials, a central lawn, a performance pavilion, terraces, and gatherings.

Transparency in concert with public programming at ground floor spaces creates visual connectivity and activates plaza and building through shared uses.

Elevated building mass and porosity/openness at Level 1 facilitates extension of the park/plaza, providing connectivity to surrounding area and integration of the plaza and building program.

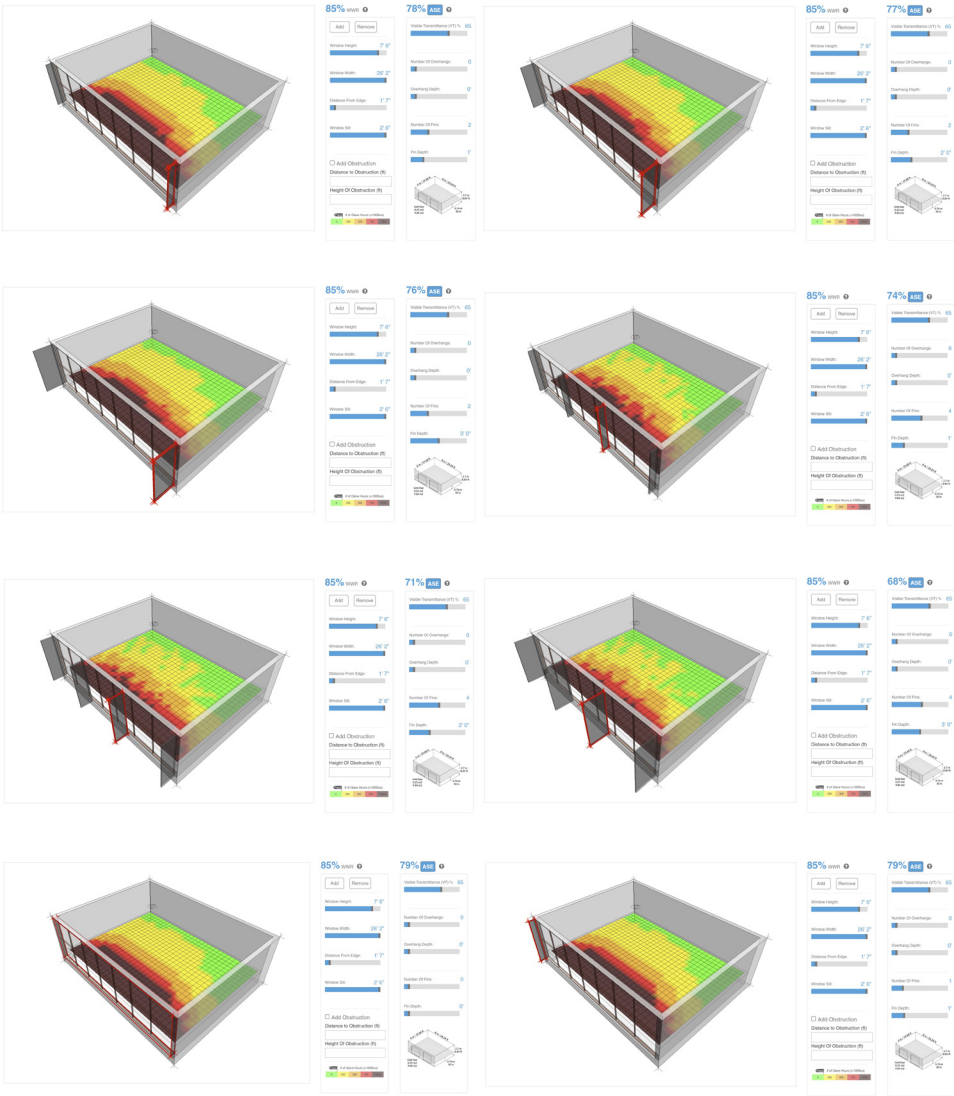
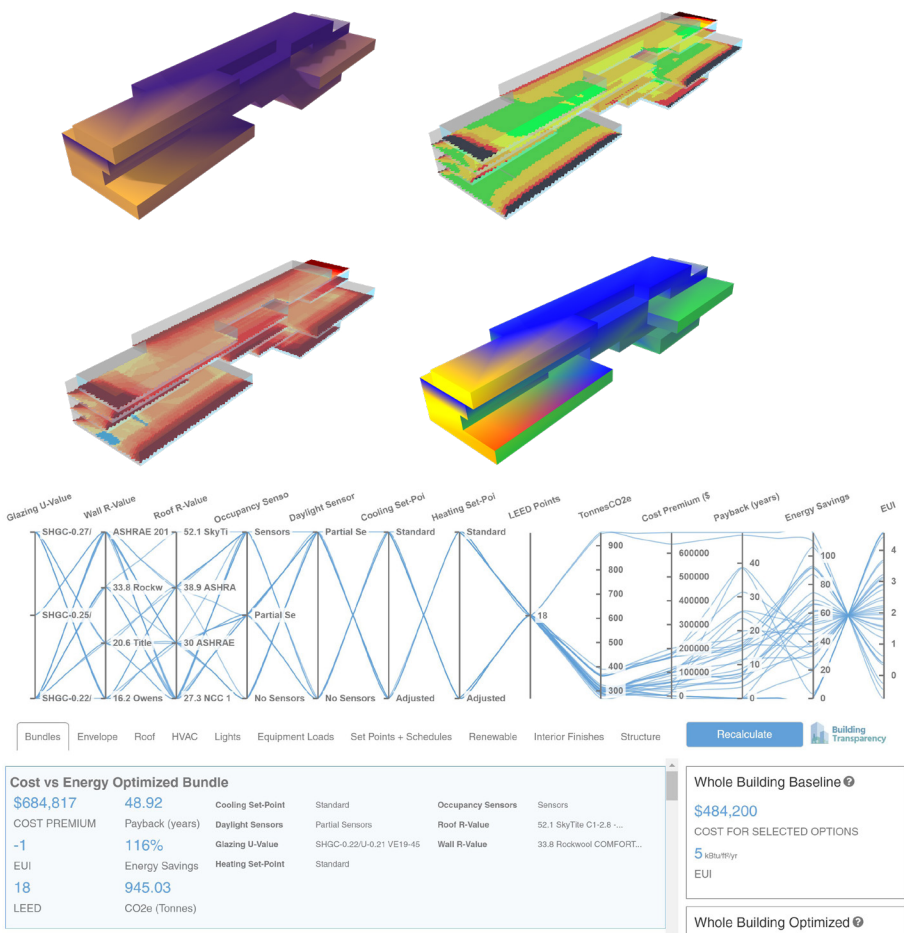
Desert botanical and paving to activate the ground plane.



Celebrate the desert, shade, manicured planting, tranquility

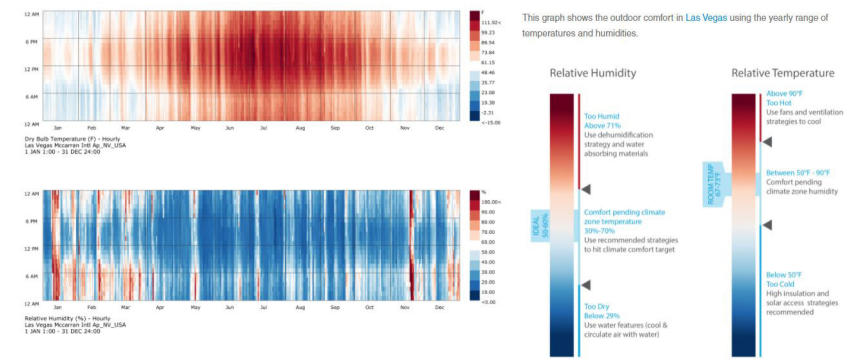
Performance

Iterative, performance based design is at the core of what we do. No two buildings, climates or programs are the same and thus each project must react to the priorities established by the team differently. We use a variety of tools to evaluate design studies from a performance standpoint and are able to iterate quickly to determine what solutions might work best within the parameters given; whether this be energy use, carbon footprint, water reduction, cost, schedule or a combination of these items. The images included below are examples of outputs from the Cove Tool which seamlessly aligns with our BIM models that allow us to quickly study the impact on elements such as sunshades, fins, orientation, shading, glare potential, energy use, and more.

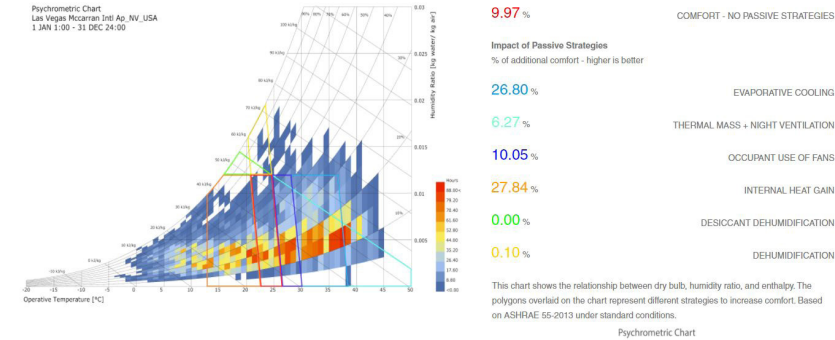


Climate Data - Las Vegas, Nevada

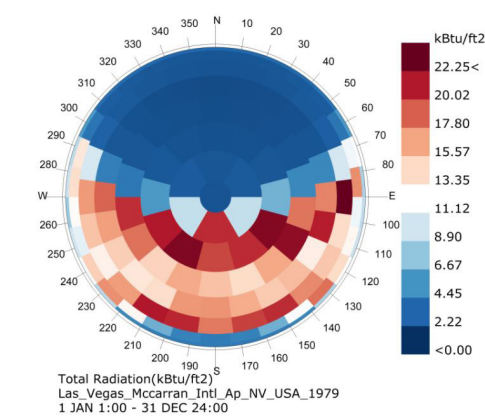
Relative Temperature & Humidity



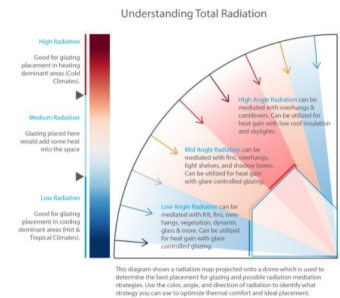
Psychrometric Chart



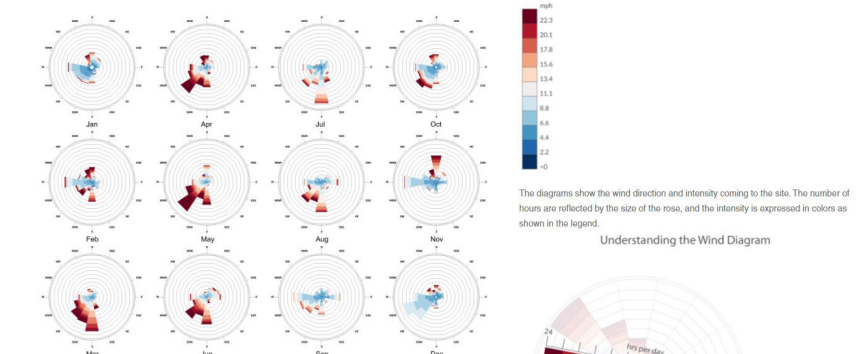
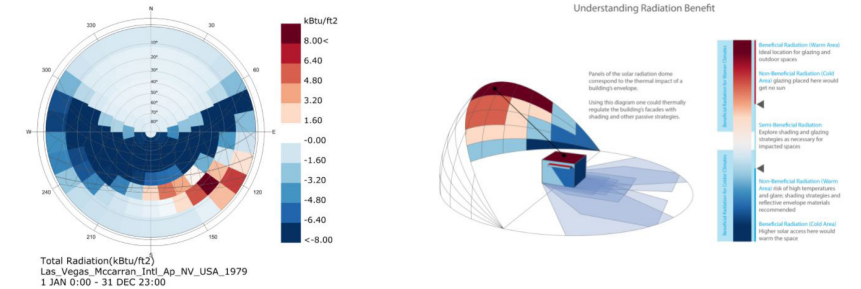
Radiation by Sky Segment



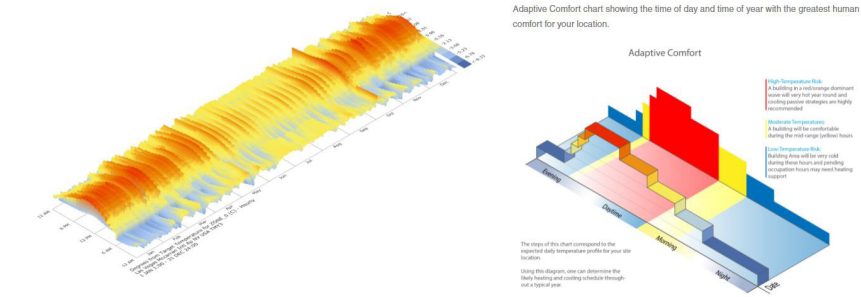
This graph maps the radiation onto a sky dome to show the intensity of the direction and intensity of solar radiation on a yearly basis around the cardinal points for Las Vegas.



Radiation Benefit



Adaptive Comfort





Where people want to be.

Why our team?

1

The LGA/BNIM/OJB team will create an iconic place where people want to visit, thereby **creating the catalyst for future growth** to help the City achieve its 2050 Master Plan goal of 300,000 new residents.

2

The LGA/BNIM/OJB team brings all of the beloved elements of the **Mojave Desert to the urban fabric** of downtown for all to enjoy.

3

The LGA/BNIM/OJB team will deliver a **transformative civic center** while also working closely with you to activate, program, and utilize the space to engage the community with events and activities.

4

The LGA/BNIM/OJB team will help the City on the path to achieving **carbon neutrality by 2050** through careful and thoughtful design.

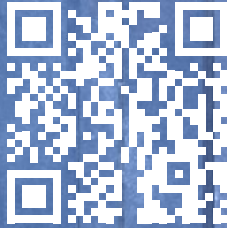
5

The LGA/BNIM/OJB team is a **dynamic and collaborative partnership** comprised of LGA - the local firm you trust and that will not let you down, BNIM - a national leader in sustainable design and creating net positive, human-purposed spaces, and OJB – designer of some of the most important civic places in the country that are active and engaging community assets.

6

The LGA/BNIM/OJB team will help the City **honor the legacy of Mayor Oscar** and his council's significant contributions to downtown and Mayor Carolyn and this council who have worked tirelessly to grow and expand downtown. We will be proud of what we will create together for our community.

Link to video.



LGA bnim OJB
ARCHITECTURE